



ASUS Clinical Displays

Designed for every healthcare institutions needs

ASUS Clinical Displays provides comprehensive line-up targeting for every healthcare institutions needs. ASUS Clinical Displays are factory calibrated with DICOM Part 14 compliance to ensure visual accuracy and consistency in finest details. ASUS Calibration tool provides user-friendly design and elaborate functions to keep DICOM long-term accuracy. ASUS Clinical Displays delivers high-performance, precise and stable capabilities to fit any scenario.



Key Features

- Compliant with DICOM Part 14 standard
- Auto compensation of DICOM curve for ambient light changing
- Anti-Glare, Low-Reflection with Eye Care+ to protect eyes from long time use
- Antibacterial-treated housing and hotkeys*
- Ergonomic tilt, swivel, pivot and height adjustment, VESA wall-mount compatible
- Multiple I/O for flexibility: DisplayPort, HDMI, USB-C and USB hub
- IEC 60601-1, IEC 60601-1-2 Compliance / FDA Class I (TFDA under processing)

* Vary by models

**All specifications are subject to change without notice

ASUS

DISTRIBUTED BY
vimeditech

► Target Audience

Healthcare Practitioners in Hospitals/Clinics

Hospitals, clinics, nursing homes, and other healthcare institutions may purchase and use healthcare monitoring devices to provide high-quality healthcare, monitor patients, and support medical imaging viewing. Such as radiological modalities, PACS...etc.



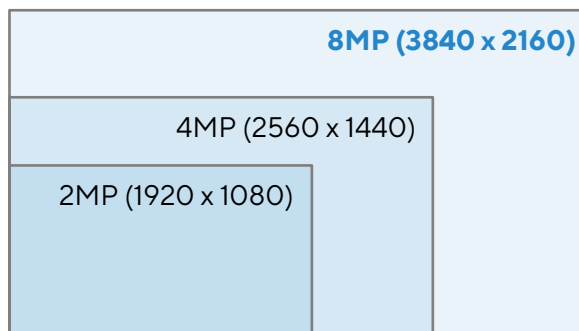
Research Institutions

Healthcare monitoring devices play a crucial role in supporting scientific endeavors by enabling researchers to delve into disease epidemiology. Additionally, these devices empower healthcare organizations to track public health trends meticulously, develop informed policies, and mount swift and effective responses to outbreaks.



▶ Impeccable Detailed Visuals in 8MP

ASUS Clinical Displays offers high resolution displaying up to 8 megapixels images give you four times the pixel density and up to 300% more onscreen space than similarly-sized 2 megapixels displays. This means you get to enjoy sharp, detailed visuals. On top of that, more onscreen space for multitasking, so any image could be fit in or even side by side comparison on a single screen.



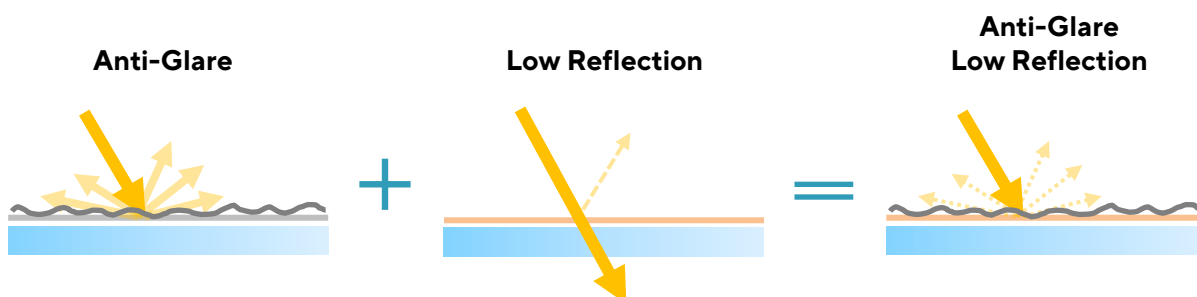
▶ Advanced Panel Technology

ASUS Clinical Displays feature a variety of panel innovations to meet industry's needs and deliver the best viewing experiences. The IPS panels provide wide 178° viewing angles to minimize color shift on both horizontal and vertical planes, The latest OLED panels incorporate pure RGB self-illuminating pixels to offer true black imagery with exceptional contrast and detail.



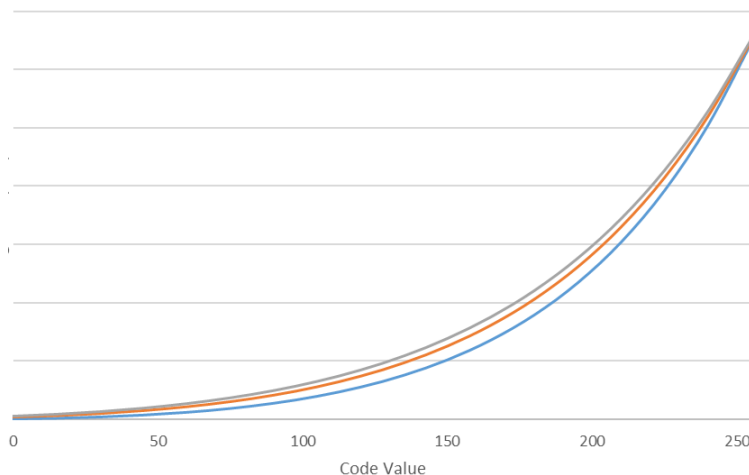
▶ Protect Your Eyes

ASUS Clinical Displays is always take care of your eyes. Made with AGLR (Anti-glare, Low-reflection) coating, and undergone stringent performance tests and has been certified by TÜV Rheinland laboratories, a global provider of technical, safety, and certification services, to be flicker-free and to emit low blue light levels.



▶ ASUS exclusive DICOM Preset

ASUS exclusive **DICOM Preset Mode** provides **multiple ambient brightness setting** (0 lux, 50 lux, 100 lux) and auto detected brightness setting through ambient light sensor to provide different DICOM curves for different environmental changes. ASUS Clinical Displays compliant with the Digital Imaging and Communications in Medicine (DICOM) Part 14 Grayscale Standard Display Function (GSDF) standard.



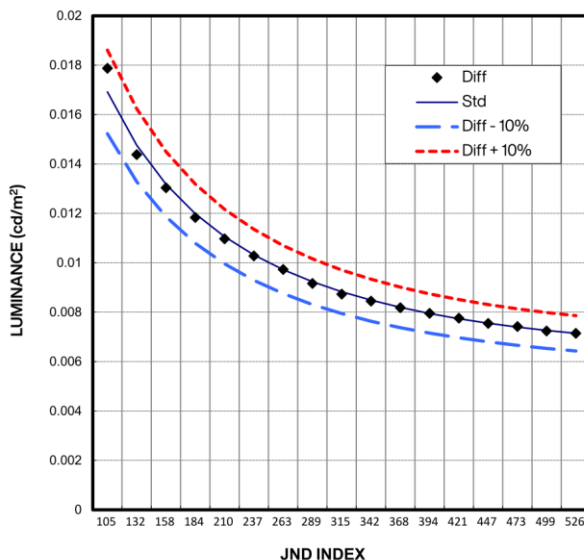
— Dicom_0lux
— Dicom_50lux
— Dicom_100lux

Ambient Light Sensor
Synchronizes display brightness with environment light changes



▶ Accuracy out of Box

To provides reliable images and stable grayscale, ASUS Clinical Displays compliant with the Digital Imaging and Communications in Medicine (DICOM) Part 14 GSDF standard. Each ASUS Clinical display is factory calibrated to guarantee DICOM color accuracy. The display then undergoes stringent testing using ASUS advanced grayscale tracking technology to ensure smoother color gradations, better uniformity with **Just-Noticeable Difference (JND) < 10%**.

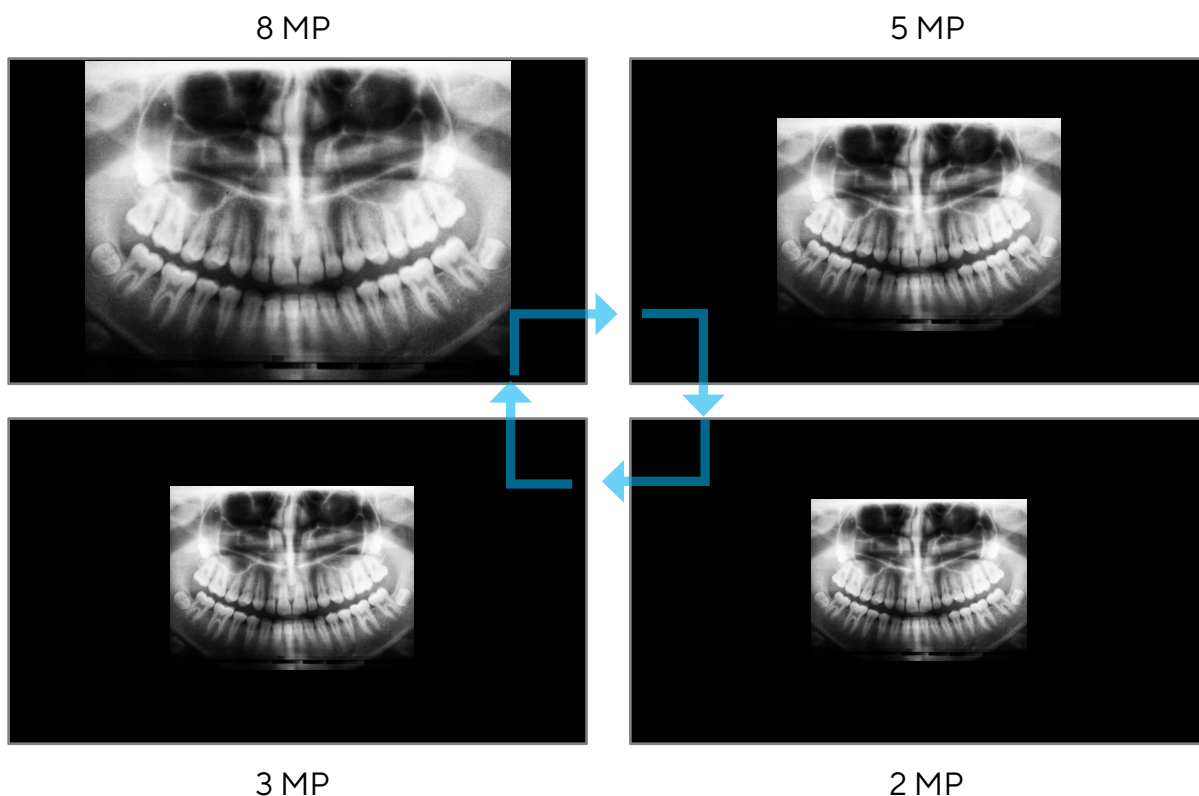


< 10%

Just-Noticeable Difference

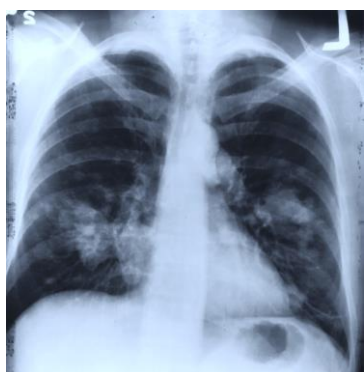
► Display at the Suitable Screen Resolution

In different medical imaging modalities, the presentation of medical images can differ in terms of both size and the amount of information displayed. ASUS Clinical Displays can simulate multiple resolutions to display varies source of medical image with onscreen dot to dot present via OSD pixel setting.

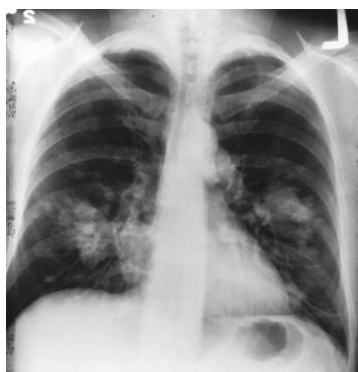


► Switchable Color & Monochrome

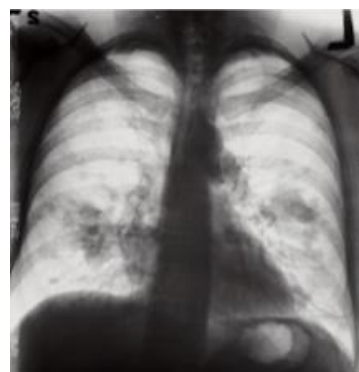
ASUS Clinical Displays features color and **two Positive and Negative film of monochrome** to helps X-ray reading in different perspective.



Off (Normal, Color)



Positive Film (B/W)



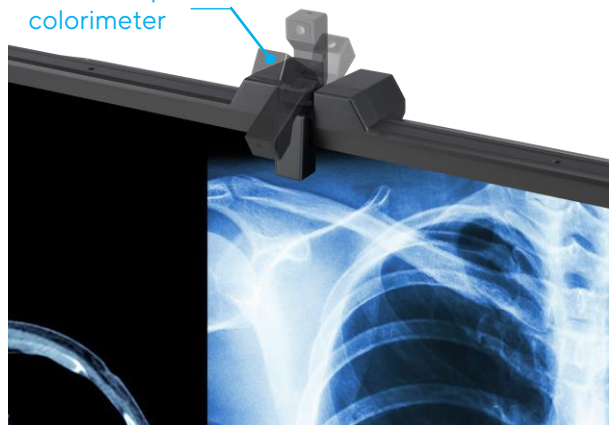
Negative Film

► Intuitive and Intelligent Calibration

Self Calibration*

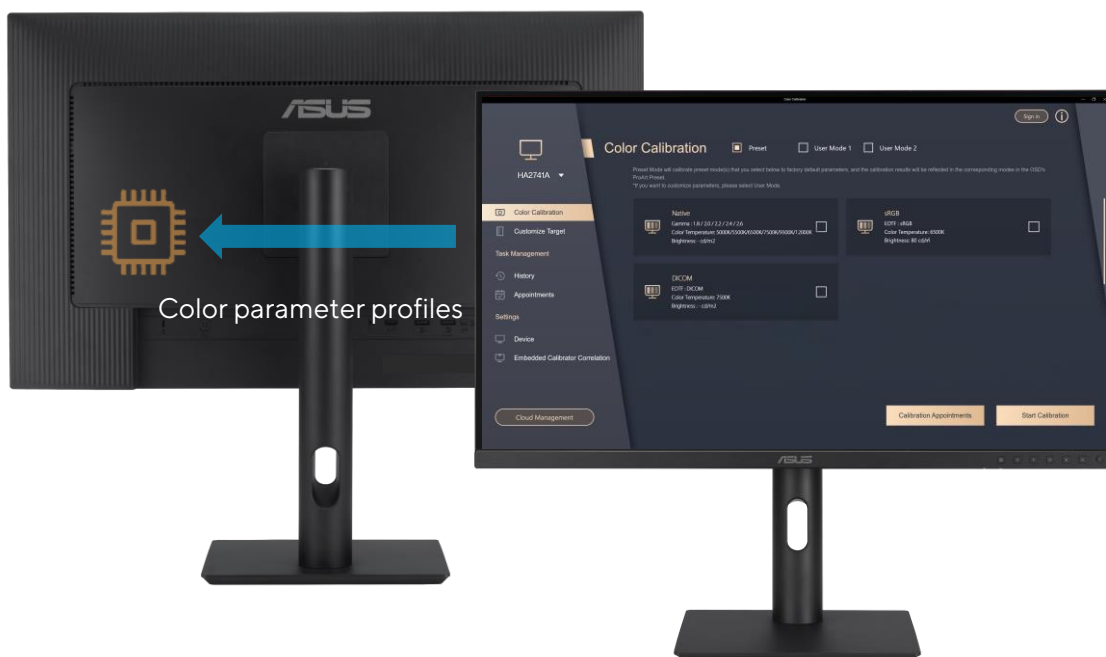
ASUS Clinical Displays now boasts an innovative self-calibration feature for the embedded colorimeter. The self-calibration is a **standalone solution** without any software and compatible with any operating system. You can directly complete the calibration and scheduled through the OSD operation of ASUS Clinical Displays. With this flexibility, you can achieve grayscale consistency anytime and anywhere.

motorized flip colorimeter



ASUS Calibration

ASUS Calibration technology **saves all color parameter profiles on the monitor's internal scaler IC chip**, instead of on the PC. The monitor can be calibrated and the look-up table subsequently rewritten, allowing users to connect it to devices with different operating systems or applications without needing to adjust settings.



*Vary by model

▶ Extensive Connectivity

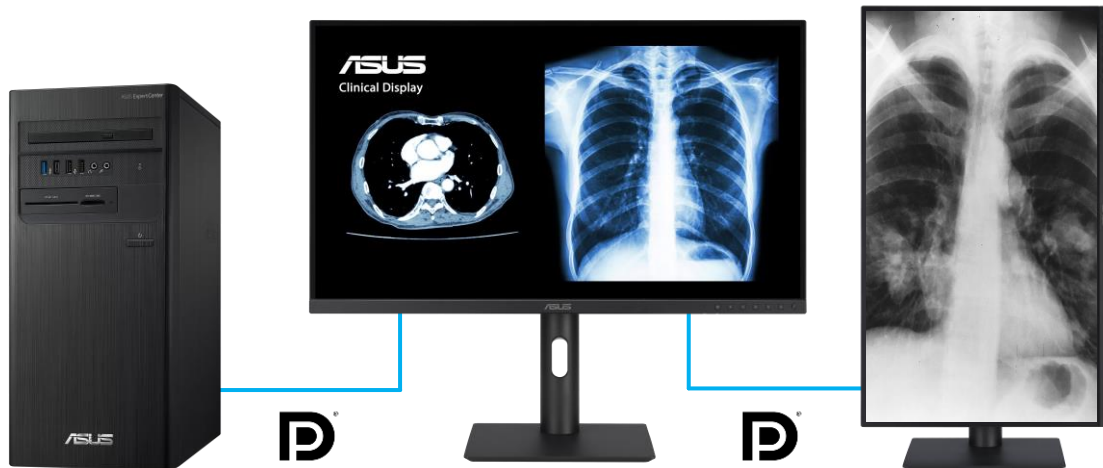
Rich connectivity offers a USB-C port enables superfast data transfers, video signal – all via a single cable. DisplayPort, HDMI and USB3.2 hub for compatibility with current and future displays and peripherals.



▶ Perfect for Multi-display Setup*



ASUS Clinical Displays feature **DisplayPort daisy-chain** functionality, enabling users to connect multiple displays to a single video source in a seamless chain, resulting in an enhanced productivity experience.



DisplayPort Daisy-chain

▶ Diverse Viewing Options

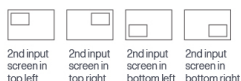
Picture-by-Picture (PbP)

View two to four* different settings simultaneously by placing multiple input sources onscreen side-by-side; and configure each individual window's color settings with sRGB, DICOM, User Mode 1 / 2.



Picture-in-Picture (PiP)

Easily place your second input source in a window in one corner of the display.



*Vary by model

► Thoughtful Design

Ergonomic Stand

ASUS Clinical Displays features ergonomic stand offers tilt, swivel, pivot, and height adjustments. Being able to pivot the screen 90° clockwise or anticlockwise to portrait orientation comes in handy when check X-ray or working with long documents.



Height Adjustment



Pivot



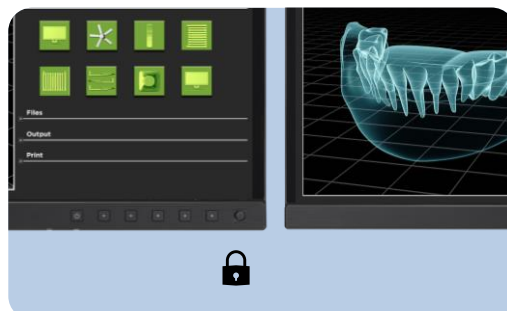
Swivel



Tilt

Front Button Design & OSD Key Lock

Convenient and intuitive quick setup, suitable for multiple display setup. OSD key lock can disable all function keys to prevents unauthorized adjustment of parameter settings.

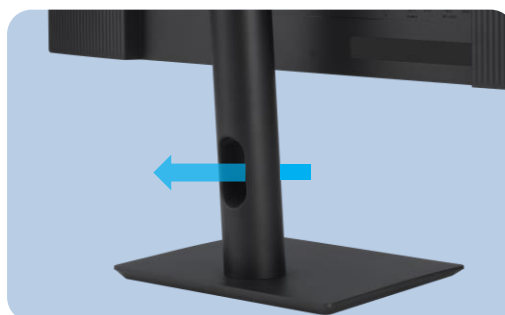


VESA Wall Mountable

Compatible with the 100 x 100 mm VESA wall-mount standard enhances space efficiency, reduces clutter, and creates a sleek and organized appearance in your workspace.

Cable Management

Cable management design helps you organize and hide various cables to keep your desk area tidy.

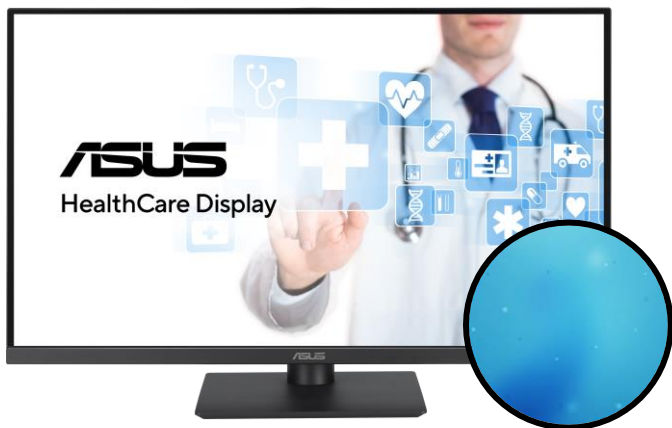


▶ Long-lasting Antibacterial Treatment*



Antibacterial

The housing and hotkeys on ASUS Clinical Displays feature an antibacterial treatment¹. By preventing bacteria adhesion² by up to 99.9%, it keeps key areas of the monitor clean and hygienic, potentially reducing the spread of harmful bacteria.



With Antibacterial Treatment



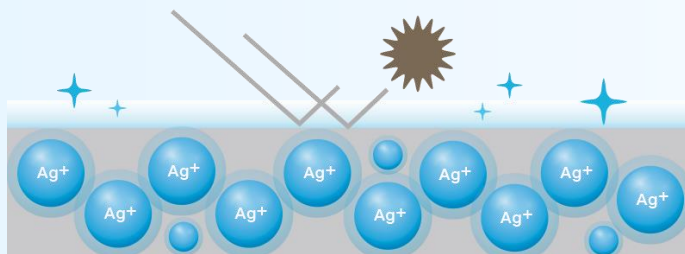
Without Antibacterial Treatment

ASUS Clinical Displays has been subjected to the **ISO 22196** Antimicrobial Activity and Efficacy tests conducted by independent testing lab SGS.



How Ionic Silver works

Positively-charged silver (Ag⁺) ions bind with the cell walls of negatively-charged microbes and bacteria, disrupting their internal functions and killing them off.



1. This proprietary antibacterial treatment is registered by the U.S. EPA and authorized under EU BPR.
 2. Tested by an independent third-party laboratory according to the ISO 22196 standard (Measurement of antibacterial activity on plastics and other non-porous surfaces), using bacterial cultures that include Escherichia coli and Staphylococcus aureus, with an antibacterial activity result of R > 2 compared to an untreated surface. R = 2 indicates a 99.9% reduction in bacterial activity.

*Vary by model

► Your Trust, Our Commitment

ASUS Clinical Displays compliant with DICOM Part 14 standard, IEC 62368-1, IEC 60601-1-2 IEC 60601-1-2 and ISO13485 compliance. A trusted 3-year* warranty represents rigorous quality control, compliance, and longevity.

IEC 60601-1-2 ensures the safety and non-interference of medical devices, enhances patient safety, and promotes interoperability.

IEC 62368-1, IEC 60601-1, IEC 60601-1-2, ISO13485, RoHS, FDA Class I (TFDA under processing)



Sustaining an Incredible Future



Environmental Certification

ASUS Clinical Displays are stringently tested to meet the requirements of world-leading sustainability certifications. These tests include a comprehensive database of up-to-date criteria, independent verification, and a structured system for continuous improvement.



Eco-friendly Packaging

ASUS Clinical Displays packaging are made of at least 80% recycled cardboard. ASUS has designed the packaging to minimize weight and volume, which helps conserve natural resources and allows more devices to be transported in a single shipping container.



Energy-Efficient Features

Select ASUS Clinical Displays have a power-saving Eco-mode, and achieve minimal power consumption with hard-switch off.

*Vary by model

► More Applications

While **IEC 60601-1-2** is a standard for medical electrical equipment, displays compliant with this standard may find applications in non-medical industries, especially for specialized applications with stringent electromagnetic compatibility requirements. **8MP 10-bit displays** provides higher color depth, which positively impacts the gray-scale and reliability. This technology not only enhances visual quality but also contributes to improved perception of details.



Industrial Monitoring

Operating in harsh electromagnetic environments, can ensure the stability of monitoring systems.



Military Applications

In certain military applications needs strict electromagnetic compatibility requirements.



Specialized Machinery and Scientific Instruments

Certain specialized machinery and scientific instruments may require displays conforming to specific standards to ensure correct and reliable operation.



Explosive Environments

In environments with explosive hazards, such as chemical plants or the oil and gas industry, equipment adhering to relevant standards.



Image and Video Analysis

In scientific research, Geographic Information Systems (GIS), environmental monitoring, and other fields where detailed analysis of high-resolution grayscale images is essential, aiding accurate assessment of images.

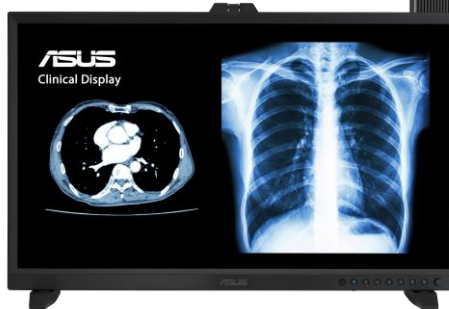


Science Education

In scientific experiments and educational applications can provide high-precision grayscale performance, facilitating accurate display of experimental results and educational imagery.

ASUS MH3281A

Clinical Display



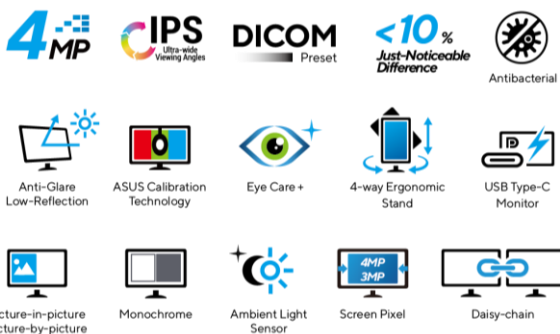
Displays	Panel Size	31.5-inch (80.09cm) 16:9
	Resolution	8MP (3840 x 2160 pixels)
	Display Viewing Area (HxV)	698.112 x 392.688 mm
	Display Surface	AGLR (Anti-glare, Low-reflection)
	Panel Type	RGB OLED
	Viewing Angle (CR ≥10, H/V)	178°/178°
	Pixel Pitch	0.182 mm
	Brightness (Typ.)	250cd/m ²
	Contrast Ratio (Typ.)	1,000,000:1
	Display Colors	1073.7M (10 bit)
Video Inputs	Response Time	0.1ms (GTG)
	DisplayPort1.4	x 1
	HDMI(v2.0)	x 3
	USB-C	x 1 (DP Alt Mode, PD 15W)
Features	USB Hub	USB 3.2 Gen2 Type-A x 4
	Earphone Jack	Yes
	Preset Mode	Native / sRGB / DICOM (0, 50, 100,lux) / DICOM_Auto / User Mode 1 / User Mode 2
	Color Temp. Selection	6 Modes (5000K / 5500K / 6500K / 7500K / 9300K / 12000K)
	Monochrome	Off / Positive / Native
	Gamma Curve	2.0 / 2.2 / 2.4
	Aspect Control	Full / Dot to Dot / 1:1
	Screen Pixel	8MP / 6MP / 5MP / 3MP
	Picture-in-Picture	Yes
	Picture-by-Picture	Yes (2~4 input sources with 2 color engine)
	Uniformity Compensation	NA
	OSD Auto Rotation	Yes
	HDCP Support	Yes, 2.2
	RGB Tuning	Yes
Blue Light Filter	Yes	
Rest Reminder	Yes	
Color Augmentation	Yes	
Sensor	Embedded Colorimeter Sensor	Yes
	Ambient Light Sensor	Yes
	Proximity Sensor	Yes
Power Requirements	Power On (Typical)	< 23.2W
	Power Saving Mode	< 0.5W
	Power Off Mode	< 0.3W (Hard Switch)
	Power Frequency	100-240V, 50/60Hz
Mechanical Design	Color	Black / White
	Antibacterial Treatment	-
	Tilt	+23° ~ -5°
	Swivel	+30° ~ -30°
	Pivot	+90° ~ -90°
	Height Adjustment	0-130 mm
Dimensions (Est.) (W x H x D)	VESA Wall Mounting	100 x 100 mm
	Kensington Lock	Yes
	Phys. Dimension	73.54 x (49.69-62.69) x 24.50 cm (28.95" x (19.56"-24.68") x 9.65")
	Phys. Dimension without Stand	73.54 x 46.69 x 5.44 cm (28.95" x 18.38" x 2.14")
Weight (Est.)	Box Dimension	87.8 x 61.6 x 29.8 cm (34.57" x 24.25" x 11.73")
	Net Weight	14.8 kg (32.63 lbs)
	Net Weight without Stand	7.4 kg (16.31 lbs)
	Gross Weight	18.2 kg (40.12 lbs)
Reliability	Operating Temperature	0°C ~ 40°C
	Storage Temperature	-20°C ~ 60°C
	Operating Humidity (RH)	5% ~ 90%
	Storage Humidity (RH)	5% ~ 90%
Compliance Standard		IEC 62368-1, IEC 60601-1, IEC 60601-1-2, AAPM TG270, TG18, ISO13485, RoHS, WHQL Windows 10/11, TUV Flicker Free, TUV Low Blue Light, FDA Class I (TFDA under processing)
Accessories (Vary by regions)		158.4W Power Adaptor, Power Cord, HDMI Cable, DisplayPort Cable, USB-C Cable, Quick Start Guide, Warranty Card

* Power Consumption is measuring a screen brightness of 200 nits without audio / USB / Card reader connection

**All specifications are subject to change without notice

ASUS MH2741A

Clinical Display



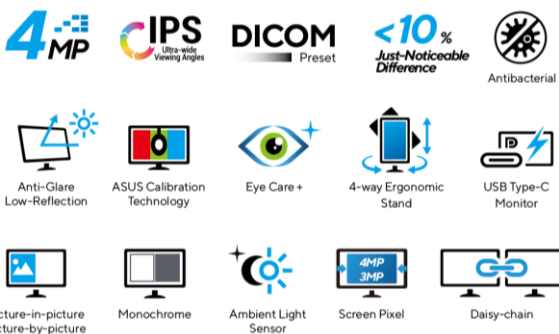
Displays	Panel Size	27-inch (68.46cm) 16:9
	Resolution	3.6MP (2560 x 1440 pixels)
	Display Viewing Area (HxV)	596.74 x 335.66 mm
	Display Surface	AGLR (Anti-glare, Low-reflection)
	Panel Type	IPS
	Viewing Angle (CR ≥10, H/V)	178°/178°
	Pixel Pitch	0.2331 mm
	Brightness (Typ.)	350cd/m ²
	Contrast Ratio (Typ.)	900:1
	Display Colors	16.7M (8 bit)
Response Time	5ms (GTG)	
Video Inputs	DisplayPort1.4	x 2 (in, out)
	HDMI(v2.0)	x 1
	USB-C	x 1 (DP Alt Mode, PD 15W)
Features	USB Hub	USB 3.2 Gen1 Type-C x 1 + Type-A x 3
	Earphone Jack	Yes
	Preset Mode	Native / sRGB / DICOM (0, 50, 100,lux) / DICOM_Auto / User Mode 1 / User Mode 2
	Color Temp. Selection	6 Modes (5000K / 5500K / 6500K / 7500K / 9300K / 12000K)
	Monochrome	Off / Positive / Native
	Gamma Curve	2.0 / 2.2 / 2.4
	Aspect Control	Full / Dot to Dot / 1:1
	Screen Pixel	4MP / 3MP
	Picture-in-Picture	Yes
	Picture-by-Picture	Yes (2 input sources with 2 color engine)
	Uniformity Compensation	Yes
	OSD Auto Rotation	Yes
	HDCP Support	Yes, 2.2
	RGB Tuning	Yes
	Blue Light Filter	Yes
Rest Reminder	Yes	
Color Augmentation	Yes	
Sensor	Embedded Colorimeter Sensor	-
	Ambient Light Sensor	Yes
	Proximity Sensor	-
Power Requirements	Power On (Typical)	< 13W
	Power Saving Mode	< 0.5W
	Power Off Mode	< 0.3W (Hard Switch)
	Power Frequency	100-240V, 50/60Hz
Mechanical Design	Color	Black / White
	Antibacterial Treatment	Yes
	Tilt	+23° ~ -5°
	Swivel	+30° ~ -30°
	Pivot	+90° ~ -90°
	Height Adjustment	0-130 mm
	VESA Wall Mounting	100 x 100 mm
Kensington Lock	Yes	
Dimensions (Est.) (W x H x D)	Phys. Dimension	61.33 x (40.07-53.67) x 19.72 cm (24.15" x (15.78"-21.13") x 7.76")
	Phys. Dimension without Stand	61.33 x 36.34 x 4.49 cm (24.15" x 14.35" x 1.77")
	Box Dimension	69.5 x 42.1 x 13.30 cm (27.36" x 16.57" x 5.24")
Weight (Est.)	Net Weight	6.7 kg (14.78 lbs)
	Net Weight without Stand	5 kg (11.02 lbs)
	Gross Weight	9.3 kg (20.50 lbs)
Reliability	Operating Temperature	0°C ~ 40°C
	Storage Temperature	-20°C ~ 60°C
	Operating Humidity (RH)	10% ~ 90%
	Storage Humidity (RH)	5% ~ 90%
Compliance Standard		IEC 62368-1, IEC 60601-1, IEC 60601-1-2, AAPM TG270, IEC63563-1, ISO13485, RoHS, WHQL Windows 10/11, TÜV Flicker Free, TÜV Low Blue Light, FDA Class I (TFDA under processing)
Accessories (Vary by regions)		90W Power Adaptor, Power Cord, HDMI Cable, DisplayPort Cable, USB-C Cable, Quick Start Guide, Warranty Card

* Power Consumption is measuring a screen brightness of 200 nits without audio / USB / Card reader connection

**All specifications are subject to change without notice

ASUS MH2441A

Clinical Display



Displays	Panel Size	23.8-inch (60.45cm) 16:9
	Resolution	3.6MP (2560 x 1440 pixels)
	Display Viewing Area (HxV)	526.85 x 296.35 mm
	Display Surface	AGLR (Anti-glare, Low-reflection)
	Panel Type	IPS
	Viewing Angle (CR ≥10, H/V)	178°/178°
	Pixel Pitch	0.2058 mm
	Brightness (Typ.)	300cd/m ²
	Contrast Ratio (Typ.)	900:1
	Display Colors	16.7M (8 bit)
Response Time	5ms (GTG)	
Video Inputs	DisplayPort1.4	x 2 (in, out)
	HDMI(v2.0)	x 1
	USB-C	x 1 (DP Alt Mode, PD 15W)
Features	USB Hub	USB 3.2 Gen1 Type-C x 1 + Type-A x 3
	Earphone Jack	Yes
	Preset Mode	Native / sRGB / DICOM (0, 50, 100,lux) / DICOM_Auto / User Mode 1 / User Mode 2
	Color Temp. Selection	6 Modes (5000K / 5500K / 6500K / 7500K / 9300K / 12000K)
	Monochrome	Off / Positive / Native
	Gamma Curve	2.0 / 2.2 / 2.4
	Aspect Control	Full / Dot to Dot / 1:1
	Screen Pixel	4MP / 3MP
	Picture-in-Picture	Yes
	Picture-by-Picture	Yes (2 input sources with 2 color engine)
	Uniformity Compensation	Yes
	OSD Auto Rotation	Yes
	HDCP Support	Yes, 2.2
	RGB Tuning	Yes
	Blue Light Filter	Yes
Rest Reminder	Yes	
Color Augmentation	Yes	
Sensor	Embedded Colorimeter Sensor	-
	Ambient Light Sensor	Yes
	Proximity Sensor	-
Power Requirements	Power On (Typical)	< 14.5W
	Power Saving Mode	< 0.5W
	Power Off Mode	< 0.3W (Hard Switch)
	Power Frequency	100-240V, 50/60Hz
Mechanical Design	Color	Black / White
	Antibacterial Treatment	Yes
	Tilt	+23° ~ -5°
	Swivel	+30° ~ -30°
	Pivot	+90° ~ -90°
	Height Adjustment	0-130 mm
	VESA Wall Mounting	100 x 100 mm
Kensington Lock	Yes	
Dimensions (Est.) (W x H x D)	Phys. Dimension	53.96 x (38.51-51.51) x 19.72 cm (21.24" x (15.16"-20.28") x 7.76")
	Phys. Dimension without Stand	53.96 x 32.22 x 4.46 cm (21.24" x 12.69" x 1.76")
	Box Dimension	62.00 x 39.00 x 12.7 cm (24.41" x 15.35" x 5.00")
Weight (Est.)	Net Weight	5.4 kg (11.91 lbs)
	Net Weight without Stand	3.7 kg (8.16 lbs)
	Gross Weight	8.2 kg (18.08 lbs)
Reliability	Operating Temperature	0°C ~ 40°C
	Storage Temperature	-20°C ~ 60°C
	Operating Humidity (RH)	10% ~ 90%
	Storage Humidity (RH)	5% ~ 90%
Compliance Standard		IEC 62368-1, IEC 60601-1, IEC 60601-1-2, AAPM TG270, IEC63563-1, ISO13485, RoHS, WHQL Windows 10/11, TÜV Flicker Free, TÜV Low Blue Light, FDA Class I (TFDA under processing)
Accessories (Vary by regions)		90W Power Adaptor, Power Cord, HDMI Cable, DisplayPort Cable, USB-C Cable, Quick Start Guide, Warranty Card

* Power Consumption is measuring a screen brightness of 200 nits without audio / USB / Card reader connection

**All specifications are subject to change without notice

ASUS Clinical Display Series

SPECIFICATIONS

MH3281A
8MP

MH2741A
3.6MP

MH2441A
3.6MP


Displays	Panel Size	31.5-inch (80.09cm) 16:9	27-inch (68.46cm) 16:9	23.8-inch (60.45cm) 16:9
	Resolution	8MP (3840 x 2160 pixels)	3.6MP (2560 x 1440 pixels)	3.6MP (2560 x 1440 pixels)
	Display Viewing Area (HxV)	698.112 x 392.688 mm	596.74 x 335.66 mm	526.85 x 296.35 mm
	Display Surface	AGLR (Anti-glare, Low-reflection)	AGLR (Anti-glare, Low-reflection)	AGLR (Anti-glare, Low-reflection)
	Panel Type	RGB OLED	IPS	IPS
	Viewing Angle (CR≥10, H/V)	178° / 178°	178° / 178°	178° / 178°
	Pixel Pitch	0.182 mm	0.2331 mm	0.2058 mm
	Brightness (Typ.)	250cd/m ²	350cd/m ²	300cd/m ²
	Contrast Ratio (Typ.)	1,000,000:1	900:1	900:1
	Display Colors	1073.7M (10 bit)	16.7M (8 bit)	16.7M (8 bit)
Response Time	0.1ms (GTG)	5ms (GTG)	5ms (GTG)	
Video Inputs	DisplayPort1.4	x1	x2 (in, out)	x2 (in, out)
	HDMI(v2.0)	x3	x1	x1
	USB-C	x1 (DP Alt Mode, PD 15W)	x1 (DP Alt Mode, PD 15W)	x1 (DP Alt Mode, PD 15W)
	USB Hub	USB 3.2 Gen2 Type-A x4	USB 3.2 Gen1 Type-C x1 + Type-A x3	USB 3.2 Gen1 Type-C x1 + Type-A x3
Features	Earphone Jack	Yes	Yes	Yes
	Preset Mode	Native / sRGB / DICOM (0, 50, 100,lux) / DICOM_Auto / User Mode 1 / User Mode 2	Native / sRGB / DICOM (0, 50, 100,lux) / DICOM_Auto / User Mode 1 / User Mode 2	Native / sRGB / DICOM (0, 50, 100,lux) / DICOM_Auto / User Mode 1 / User Mode 2
	Color Temp. Selection	6 Modes (5000K / 5500K / 6500K / 7500K / 9300K / 12000K)	6 Modes (5000K / 5500K / 6500K / 7500K / 9300K / 12000K)	6 Modes (5000K / 5500K / 6500K / 7500K / 9300K / 12000K)
	Monochrome	Off / Positive / Native	Off / Positive / Native	Off / Positive / Native
	Gamma Curve	2.0 / 2.2 / 2.4	2.0 / 2.2 / 2.4	2.0 / 2.2 / 2.4
	Aspect Control	Full / Dot to Dot / 1:1	Full / Dot to Dot / 1:1	Full / Dot to Dot / 1:1
	Screen Pixel	8MP / 6MP / 5MP / 3MP	4MP / 3MP	4MP / 3MP
	Picture-in-Picture	Yes	Yes	Yes
	Picture-by-Picture	Yes (2~4 input sources with 2 color engine)	Yes (2 input sources with 2 color engine)	Yes (2 input sources with 2 color engine)
	Uniformity Compensation	NA	Yes	Yes
	OSD Auto Rotation	Yes	Yes	Yes
	HDCP Support	Yes, 2.2	Yes, 2.2	Yes, 2.2
	RGB Tuning	Yes	Yes	Yes
	Blue Light Filter	Yes	Yes	Yes
	Rest Reminder	Yes	Yes	Yes
	Color Augmentation	Yes	Yes	Yes
	Sensor	Embedded Colorimeter Sensor	Yes	-
Ambient Light Sensor		Yes	Yes	Yes
Proximity Sensor		Yes	-	-
Power Requirements	Power On (Typical)	< 23.2W	< 13W	< 14.5W
	Power Saving Mode	< 0.5W	< 0.5W	< 0.5W
	Power Off Mode	< 0.3W (Hard Switch)	< 0.3W (Hard Switch)	< 0.3W (Hard Switch)
	Power Frequency	100~240V, 50/60Hz	100~240V, 50/60Hz	100~240V, 50/60Hz
Mechanical Design	Color	Black / White	Black / White	Black / White
	Antibacterial Treatment	-	Yes	Yes
	Tilt	+23° ~ -5°	+23° ~ -5°	+23° ~ -5°
	Swivel	+30° ~ -30°	+30° ~ -30°	+30° ~ -30°
	Pivot	+90° ~ -90°	+90° ~ -90°	+90° ~ -90°
	Height Adjustment	0~130 mm	0~130 mm	0~130 mm
Dimensions (Est.) (W x H x D)	VESA Wall Mounting	100 x 100 mm	100 x 100 mm	100 x 100 mm
	Kensington Lock	Yes	Yes	Yes
	Phys. Dimension	73.54 x (49.69~62.69) x 24.50 cm (28.95" x (19.56"~24.68") x 9.65")	61.33 x (40.07~53.67) x 19.72 cm (24.15" x (15.78"~21.13") x 7.76")	53.96 x (38.51~51.51) x 19.72 cm (21.24" x (15.16"~20.28") x 7.76")
	Phys. Dimension without Stand	73.54 x 46.69 x 5.44 cm (28.95" x 18.38" x 2.14")	(61.33 x 36.34 x 4.49 cm (24.15" x 14.35" x 1.77"))	53.96 x 32.22 x 4.46 cm (21.24" x 12.69" x 1.76")
	Box Dimension	87.8 x 61.6 x 29.8 cm (34.57" x 24.25" x 11.73")	69.5 x 42.1 x 13.30 cm (27.36" x 16.57" x 5.24")	62.00 x 39.00 x 12.7 cm (24.41" x 15.35" x 5.00")
Weight (Est.)	Net Weight	14.8 kg (32.63 lbs)	6.7 kg (14.78 lbs)	5.4 kg (11.91 lbs)
	Net Weight without Stand	7.4 kg (16.31 lbs)	5 kg (11.02 lbs)	3.7 kg (8.16 lbs)
	Gross Weight	18.2 kg (40.12 lbs)	9.3 kg (20.50 lbs)	8.2 kg (18.08 lbs)
Reliability	Operating Temperature	0°C ~ 40°C	0°C ~ 40°C	0°C ~ 40°C
	Storage Temperature	-20°C ~ 60°C	-20°C ~ 60°C	-20°C ~ 60°C
	Operating Humidity (RH)	5% ~ 90%	5% ~ 90%	5% ~ 90%
	Storage Humidity (RH)	5% ~ 90%	5% ~ 90%	5% ~ 90%
Regulation	IEC 62368-1, IEC 60601-1, IEC 60601-1-2, ISO13485, RoHS, FDA Class I (TFDA under processing)		IEC 62368-1, IEC 60601-1, IEC 60601-1-2, ISO13485, RoHS, FDA Class I (TFDA under processing)	
Certification	AAPM TG270, DIN6868, TG18, WHQL Windows 10/11, TÜV Flicker Free, TÜV Low Blue Light,		AAPM TG270, DIN6868, IEC62563-1, WHQL Windows 10/11, TÜV Flicker Free, TÜV Low Blue Light	
Accessories (Vary by regions)	158.4W Power Adaptor, Power Cord, HDMI Cable, DisplayPort Cable, USB-C Cable, Quick Start Guide, Warranty Card		90W Power Adaptor, Power Cord, HDMI Cable, DisplayPort Cable, USB-C Cable, Quick Start Guide, Warranty Card	

* Power Consumption is measuring a screen brightness of 200 nits without audio / USB / Card reader connection

**All specifications are subject to change without notice

DISTRIBUTED BY